

READ BEFORE OPERATING



***INSTRUCTION
MANUAL FOR
NEW ENGINEERS***

WARNING 66,000V OUTPUT



**BATTERSEA POWER STATION
BRITISH ELECTRICAL AUTHORITY**

POWERING BUCKINGHAM PALACE



It was a tale of two halves.

In 1929 The London Power Company broke earth and began building this colossal beacon of modernity.

Part one, Power Station A, started to generate electricity for London just seven years later.

Then, following a short pause during World War Two, building got back underway.

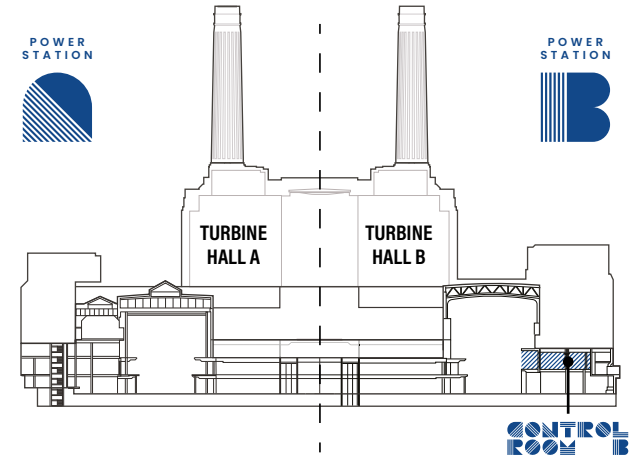
Today, 1955, the electrical supply has been nationalised and we, the British Electrical Authority welcome you, the very best and brightest engineers, to Control Room B.

Electricifying London with
203 MEGAWATTS
and keeping the lights on!

POWERING THE HOUSES OF PARLIAMENT

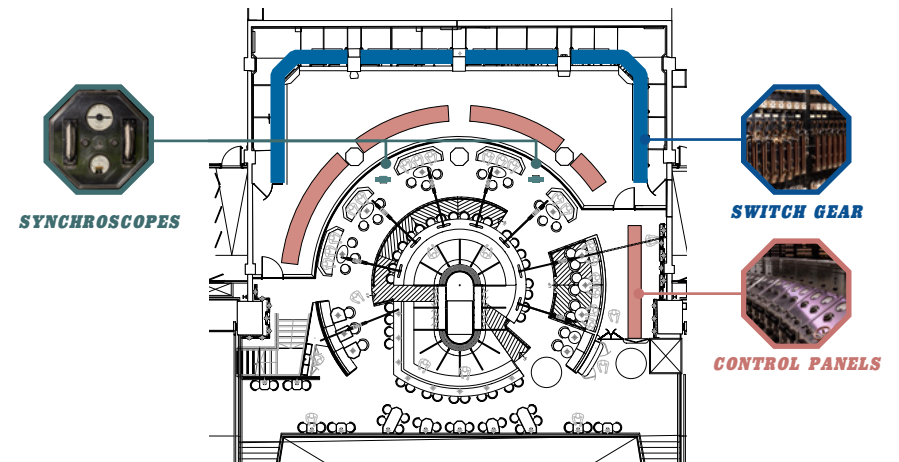
LOCATION

ONE HUNDRED AND NINE METRES TALL



TALLER THAN ST. PAUL'S CATHEDRAL

EQUIPMENT



**OK TRAINEE ENGINEER! READY TO LEARN MORE
ABOUT OUR EQUIPMENT AND THE HISTORY OF
BATTERSEA POWER STATION? SCAN THIS CODE...**





★ You have your clipboard ready? Good! Let's begin to turn up the voltage.

BEGIN ENERGISING PROTOCOL

COCKTAILS?

NO

YES

STYLE

CLASSIC

ORIGINAL

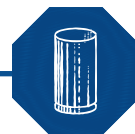
GROUP?

SINGLE

YES

FOLLOW US ON INSTAGRAM @CONTROLROOMS FOR UPDATES
COMING SOON!

⚠ Feeling lost? It's ok to ask questions when you begin a new job. Talk to a senior engineer for their recommendations based on your tastes.



THE SYNCHROSCOPE

FRESH / LIGHT / DELICATE / £13.5

Oxley gin, Essentiae lemon verbena liqueur, ginger & lemongrass cordial, pear purée, cloudy apple juice and fresh lime juice



GAS WASH

TROPICAL / FRUITY / FRESH / £13

Grey Goose L'Original vodka, bergamot liqueur, passion fruit purée, fresh lime juice and tropical fassionola syrup



66,000 VOLTS

SOUR / SWEET / FRUITY / £12.5

Bacardi Carta Blanca rum, Aperol aperitif, pineapple juice, raspberry syrup, fresh lime juice and egg white



HIGH VOLTAGE

REFRESHING / LIGHT / GINGERY / £13

Smirnoff Black No. 55 Small Batch vodka, Nardini Acqua di Cedro liqueur, Nonsuch bittersweet apple & cardamom shrub, fresh lime juice topped with Franklin & Sons original ginger ale



BATTERY LICKER

ENERGISING / CREAMY / NUTTY / £13

Bacardi Ocho rum, Disaronno liqueur, orgeat syrup and coffee



RENEWABLE ENERGY

★ non-alcoholic

REFRESHING / VIBRANT / FRUITY / £9.5 / 41 kcal

Martini Vibrante non-alcoholic aperitif, blueberry & blackcurrant cordial, fresh lime juice topped with Franklin & Sons pink grapefruit soda

MORE?

YES

**BURNING THE MIDNIGHT OIL**RICH / HERBAL
/ AROMATIC / £13.5

Tanqueray gin, Martini Riserva Speciale Ambrato vermouth,
Luxardo Bitter Bianco liqueur, Quaglia Pino Mugo liqueur, activated
charcoal, topped with sparkling wine foam

**HEAT TREATED**

REFRESHING / CITRUSY / INVIGORATING / £14

Patron Silver tequila, Martini Riserva Speciale Bitter aperitif,
chilli-infused hibiscus syrup, fresh lime juice,
topped up with Franklin & Sons pink grapefruit soda

**THE SMOKE STACK**

RICH / SPICY / BITTERSWEET / £13.5

El Jimador Blanco tequila, Nixta corn liqueur,
Ancho Reyes Verde chilli liqueur, agave syrup, smoked sea salt,
citrus essence, Angostura Bitters and Peychaud's Bitters

**LIVE WIRE**

FIZZY / CHERRY / AROMATIC / £14.5

Hennessy V.S. cognac, Evangelista Ratafia cherry liqueur,
fresh lime juice, sugar syrup, pomegranate juice, Angostura Bitters,
topped with Moët & Chandon Impérial Blanc NV Champagne

**THE BATTERSEA NIGHTCAP**WOODY / RICH
/ BOOZY / £14

Angel's Envy Bourbon whiskey, Martini Riserva Speciale Rubino
vermouth, Mancino Chinato vermouth, Fernet Branca liqueur,
coffee & chocolate cookie syrup

**EXISTENTIAL REBEL**

★ non-alcoholic

FLORAL / REFRESHING
/ DELICATE / £9.5 / 38 kcal

Caleño Light & Zesty non-alcoholic spirit, lavender syrup
and fresh lime juice

CLASSIC COCKTAILS**APEROL SPRITZ £12.5**

Aperol aperitif and sparkling wine, topped
up with Franklin & Sons 1886 soda water

NEGRONI £13

Bombay Sapphire gin, Campari aperitif,
Martini Riserva Speciale Rubino vermouth

ESPRESSO MARTINI £13.5

Belvedere vodka, Tia Maria coffee liqueur,
sugar, coffee

OLD FASHIONED £13

Woodford Reserve Bourbon whiskey,
sugar and Angostura Bitters

MARGARITA £13

El Jimador Blanco tequila,
Cointreau orange liqueur, sugar, lime



★ Avoid blackouts - ensure you are able
to make clear read-outs at all times.

CHAMPAGNE?

NO

YES

	125ML GLASS	750ML BOTTLE
Moët & Chandon Impérial Blanc NV	£15	£88
Moët & Chandon Impérial Rosé NV	£18	£95
Moët & Chandon Grand Vintage Blanc		£120
Veuve Clicquot Yellow Label NV		£95
Dom Pérignon Vintage Blanc		£295
		1,500ML MAGNUM
Moët & Chandon Impérial Blanc NV		£195
Moët & Chandon Impérial Rosé NV		£220

SPARKLING?

NO

YES

	125ML GLASS	750ML BOTTLE
Vaporetto Extra Seco Spumante	£9	£39.5
Chapel Down Brut NV		£55
Chapel Down Sparkling English Rose NV		£58

WINE

YES

NO



WHITE

COLOUR

RED

ORANGE ROSÉ

Trebbiano,
Poderi dal Nespole Le Coste,
Emilia-Romagna, Italy

£7.5

£28

Macabeo,
Bodegas Verde, Cariñena,
Spain

£8.5

£32

Sauvignon Blanc,
Spy Valley, Marlborough,
New Zealand

£10

£40

Riesling, Charles Smith
Kung Fu Girl,
Washington, USA

£45

Cortese, Morgassi
Superiore Tuffo Gavi
del Comune di Gavi,
Piemonte, Italy

£50

Chardonnay,
Chablis Domaine Gilbert
Picq & ses Fils,
Burgundy, France

£58

Sangiovese, Poderi dal
Nespole Fico Grande,
Emilia-Romagna, Italy

£7.5

£28

Tempranillo, Castillo
Clavijo Crianza,
Rioja, Spain

£8.5

£32

Shiraz, Journey's End
Huntsman, Stellenbosch,
South Africa

£9

£36

Malbec, Catena
Appellation Vista Flores,
Mendoza, Argentina

£40

Cabernet Sauvignon,
Xanadu Estate,
Margaret River, Australia

£52

Pinot Noir, Gerard
Bertrand Domaine de L'Aigle,
Occitane, France

£65

Grenache blend,
Côte Rosé VDP,
Côte Catalanes
Domaine Lafage, France

£8

£32

Grenache,
Château d'Esclans,
Whispering Angel,
Côte de Provence, France

£55

Chardonnay Blend,
Gerard Bertrand
Orange Gold, France

£60

Fingers on buzzers,
which bands had
an album covers
featuring Control
Room B?

BEER?

NO

YES

LAGER

TYPE?

ALE



FIVE GRAIN LAGER 330ml

£6

SINGHA THAI LAGER 330ml

£6.3

DAYS LAGER 0.0% 330ml 73 kcal

£5.9

Did you know... the architect of
Battersea Power Station, Sir Giles
Gilbert Scott, also designed the
famous red telephone box!



**WHITSTABLE BAY
PALE ALE** 500ml

£6.8

SHEPHERD NEAME IPA 500ml

£6.8

DAYS PALE ALE 0.0% 330ml 69 kcal

£5.9

CIDER?

NO

YES

ORCHARD VIEW CIDER 500ml

£6.8

**OLD MOUT
STRAWBERRY & APPLE** 500ml

£6.8

PECKISH?

NO

IT'S MIDDAY - WHERE'S THE COFFEE?

YES

NIBBLES

Nocellara del Belice Olives VG 241 kcal

£6.5

Rosemary Mixed Nuts VG 601 kcal

£6

Feta-stuffed Peppers V 323 kcal

£6.5

Sweet Chilli & Herb

Chargrilled Mushrooms VG 429 kcal

£6.5

Balsamic Borettane Onions VG 96 kcal

£6.5

CHEESE

Mature Cheddar V 402 kcal

£6.5

Stilton V 410 kcal

£6.5

CHARCUTERIE

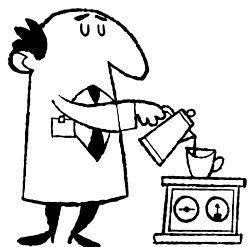
Felino Salami 302 kcal

£6.5

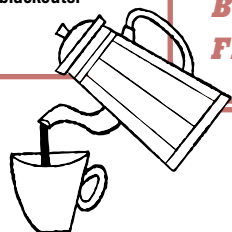
Speck 256 kcal

£6.5





⚡ Our control panels have to be crewed around the clock to avoid blackouts. Best fill up the cafetière!



BRAZILIAN MIO LOI 1975 BLEND

Served in a two cup cafetière

HOT CHOCOLATE

EARL GREY TEA

**ENGLISH
BREAKFAST TEA**

FRESH MINT TEA

£6

£4

£4

£4

£4

HOT

SOFT?

NO

PASTRIES!

Check the counter
for today's selection



COLD

FRESH ORANGE JUICE 155 kcal

£5

FRESH APPLE JUICE 110 kcal

£5

COCA-COLA 139 kcal

£4.5

DIET COKE 1 kcal

£4.5

COKE ZERO 0 kcal

£4.5

NATURAL INDIAN TONIC 68 kcal

£4.5

NATURAL LIGHT TONIC 44 kcal

£4.5

1886 SODA WATER 0 kcal

£4.5

PINK GRAPEFRUIT SODA 22 kcal

£4.5

BREWED GINGER BEER 92 kcal

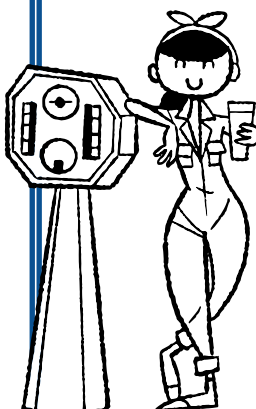
£4.5

ORIGINAL GINGER ALE 66 kcal

£4.5

ORIGINAL LEMONADE 86 kcal

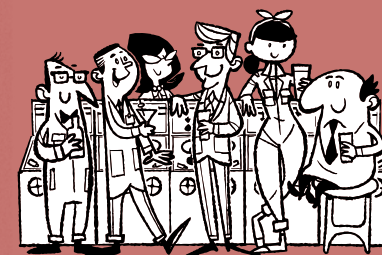
£4.5



VENUE HIRE

Control Room B provides an unrivalled setting for private parties from 50 to 180 guests. Patrons will have the chance to get an up-close view of the Control Room's original dials, control desks and switchgear racks that have been restored to their former glory.

events@controlroomb.com



KEEP UP WITH THE ENGINEERS

Follow us on Instagram

[@controlroomb](https://www.instagram.com/controlroomb)



CONTROL
ROOM

1955 ©