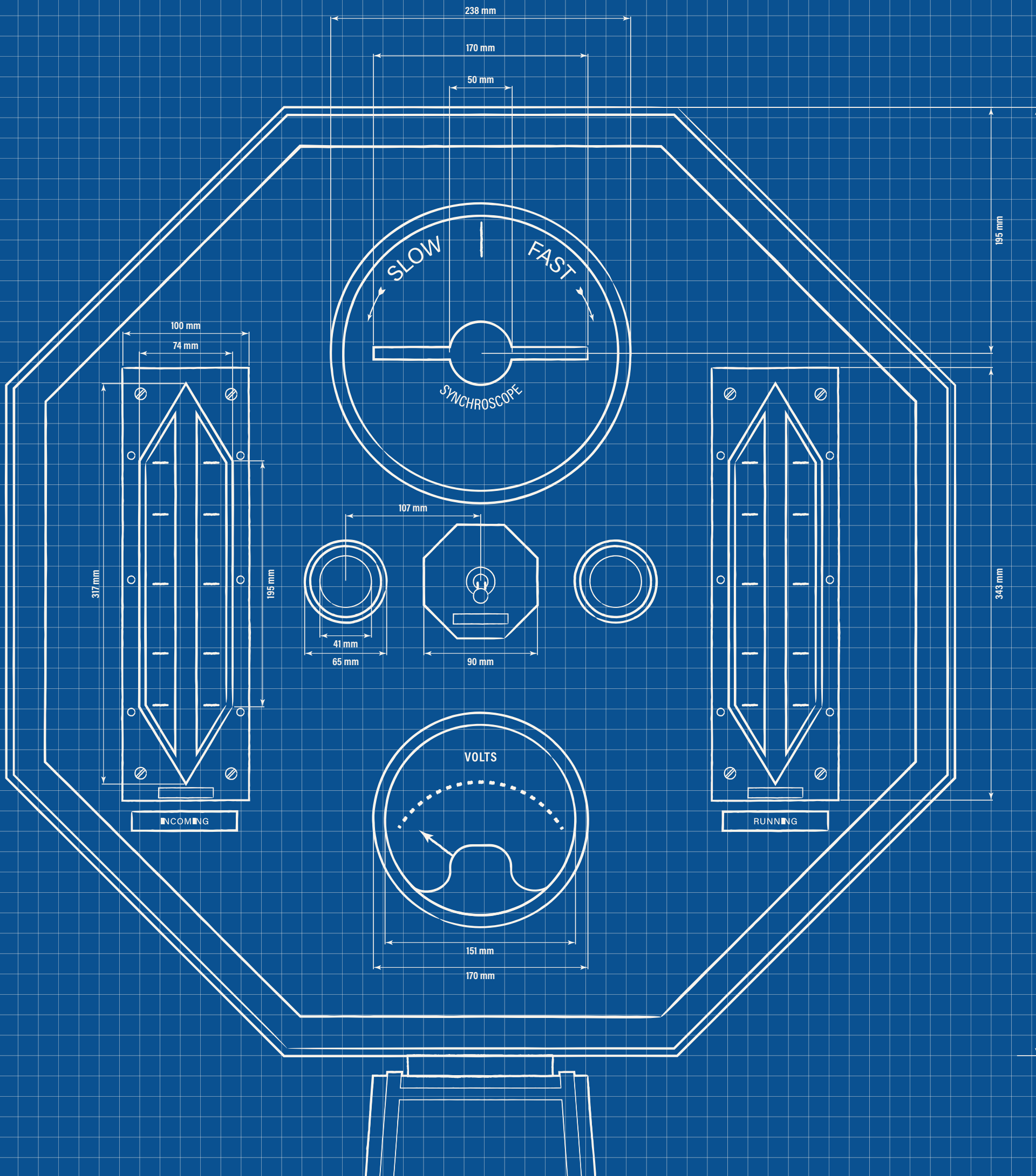


# CONTROL ROOM

## THE SYNCHROSCOPE



## COCKTAILS

PROVIDING POWER TO THE PEOPLE  
The cocktails below have been contrived by Control Room B's very own engineers with utmost meticulousness. It's true what they say: The British truly do it best.

### SIGNATURES

#### THE SYNCHROSCOPE £17

**Fruity / Citrusy**

Oxley gin, Bombay Citron Pressé gin, raspberry liqueur, blueberry wine, sugar syrup and fresh lime juice

#### AMMETER £16

**Tropical / Foamy**

Grey Goose L'Original vodka, peach liqueur, passionella syrup, passion fruit purée and fresh lime juice, topped with hibiscus & sparkling wine foam

#### CHIMNEY £15.5

**Fruity / Fresh**

Belvedere vodka, Evangelista Ratafia cherry liqueur, basil syrup, blueberries purée and fresh lime juice, topped with sparkling wine

#### BOOSTER FIELD £15

**Exotic / Tropical**

Bacardi Ocho rum, Bacardi Caribbean Spiced rum, Martini Riserva Speciale Bitter aperitif, tropical syrup, guava purée, pomegranate juice and fresh lime juice

#### BATTERSEA BRICK £16.5

**Spicy / Bittersweet**

Don Julio Blanco tequila, Aperol aperitif, cactus, pimento & prickly pear liqueur, hibiscus & pomegranate syrup, Tabasco sauce and fresh lime juice, topped with Franklin & Sons Pink Grapefruit Soda

#### VOLTMETER £15

**Nutty / Velvety**

Johnnie Walker Black Label Scotch whisky, Lazzaroni Amaretto liqueur, Mozart white chocolate liqueur, hazelnut & caramel syrup and coffee

#### ENGINEER'S PARADISE £15

**Silky / Tropical**

Bacardi Carta Blanca rum, Bacardi Coconut rum, Leblon Cachaça, Wray & Nephew White Overproof rum, pineapple & coconut syrup, pineapple juice, coconut milk and fresh lime juice

#### RHEOSTAT £16

**Smokey / Boozy**

Dewar's 12 years old Scotch whisky, Ardbeg 10 year old whisky, Mozart dark chocolate liqueur, cherry & vanilla syrup, chocolate bitters and Angostura Orange bitters

#### SMOOTH OPERATOR £15

**Sweet / Smooth**

Patrón Silver tequila, Chambord black raspberry liqueur, lychee purée and fresh lime juice

#### GENERATOR £14.5

**Floral / Refreshing**

Secret Garden Lavender gin, St-Germain elderflower liqueur, Aperol aperitif, rhubarb syrup, Paragon Labdanum cordial, fresh lime juice and mint leaves, topped with Tassoni Cedrata

#### BUSBAR £15.5

**Spicy / Citrusy**

Illegal Joven mezcal, Ancho Reyes Verde chilli liqueur, grapefruit sherbet, agave syrup, fresh coriander leaf, fresh lime juice and fresh chilli

#### BURNING THE MIDNIGHT OIL £15.5

**Bittersweet / Boozy**

Renals gin, Martini Riserva Ambrato vermouth, Luxardo Bitter Bianco liqueur, Nardini Acqua di Cedro liqueur, activated charcoal, served with hibiscus & sparkling wine foam

#### BATTERY POSITIVE £16.5

**Fruity / Fizzy**

Ciroc vodka, Cointreau orange liqueur, cranberry juice, orange marmalade and fresh lemon juice, topped with raspberry & Moët & Chandon Impérial Blanc NV Champagne foam

#### FEEDER B.1. £15

**Rich / Boozy**

Monkey 47 gin, Martini Riserva Speciale Rubino vermouth, Benedictine D.O.M. liqueur, Fernet-Branca Amaro liqueur and Peychaud's bitters

#### FEEDER B.2. £15.5

**Citrusy / Gingery**

Angel's Envy Bourbon whiskey, Akashi Tai Ginjo Yuzushu, ginger concentrate, Earl Grey tea syrup, fresh lemon juice, Angostura bitters and foamer bitters

#### SIR GILES' ELIXIR £15.5

**Complex / Woody**

Hennessy V.S. cognac, Belle de Brillet pear & cognac liqueur, Bacardi Anejo Cuatro rum, Mancino Chinato vermouth and chocolate bitters

### NON-ALCOHOLIC

#### SWITCHGEAR £6 kcal £12

**Spicy / Citrusy**

CleanCo T alcohol-free spirit, chilli-infused agave syrup and fresh lime juice

#### CIRCUIT BREAKER 120 kcal £11.5

**Sweet / Fruity**

Everleaf Mountain non-alcoholic aperitif, strawberry shrub, Nonsuch Blood Orange & Bitter Lemon shrub, pomegranate juice and fresh lemon juice

#### FUSE BOARD 99 kcal £12

**Bittersweet / Fizzy**

CleanCo G alcohol-free spirit, Martini Vibrante non alcoholic aperitif, and Crodino non-alcoholic aperitif

#### BATTERY TERMINAL 85 kcal £12

**Refreshing / Vibrant**

Seedlip Garden 108 distilled non-alcoholic spirit, Martini Vibrante non-alcoholic aperitif, blueberry & blackcurrant cordial and fresh lime juice, topped with Franklin & Sons Pink Grapefruit Soda

#### INTERCONNECTOR 110 kcal £11.5

**Fresh / Sweet**

Caleno Light & Zesty non-alcoholic spirit, watermelon syrup, pineapple & coconut syrup, pineapple juice and fresh lemon juice, topped with Franklin & Sons 1886 soda water

#### THE NIGHT SHIFT 109 kcal £12

**Bittersweet / Fresh**

Seedlip Grove 42 distilled non-alcoholic spirit, Everleaf Forest non-alcoholic aperitif, rhubarb and elderflower cordial, topped with Appletiser sparkling apple juice

### ENGINEERS ON DUTY:

BAR	FLOOR
Alex	Binoy
Ellie	Dylan
Hannah	James
Liv	Josh
Alejandro	Nandana
Dom	Ricardo
Vanessa	Sophia
Mahesh	Stacy
	Nulki
	Kelsey
	Laura
	Sara
	Dan
	Connor

### CLASSICS

OTHER CLASSICS ALSO AVAILABLE - JUST ASK ONE OF OUR ENGINEERS

#### APEROL SPRITZ £14.5

Aperol aperitif and sparkling wine, topped with Franklin & Sons 1886 soda water

#### ESPRESSO MARTINI £15

42 Below vodka, Caffé Borghetti liqueur, sugar and coffee

#### OLD FASHIONED £15

Buffalo Trace Bourbon whiskey, sugar and Angostura bitters

#### NEGRONI £15

Bombay Sapphire gin, Campari aperitif and Martini Riserva Speciale Rubino vermouth

#### MARGARITA £15

Cazadores Blanco tequila, Cointreau orange liqueur and lime

THIS SIDE CONTAINS:

SCHEMATICS  
ELECTRICALS  
COCKTAILS:  
SIGNATURE  
CLASSICS  
LOW-ALCS  
NON-ALCS  
FUN TIMES  
SAFETY INFO



OPERATIONAL  
BLUEPRINT

CONTROL ROOM B © 1955

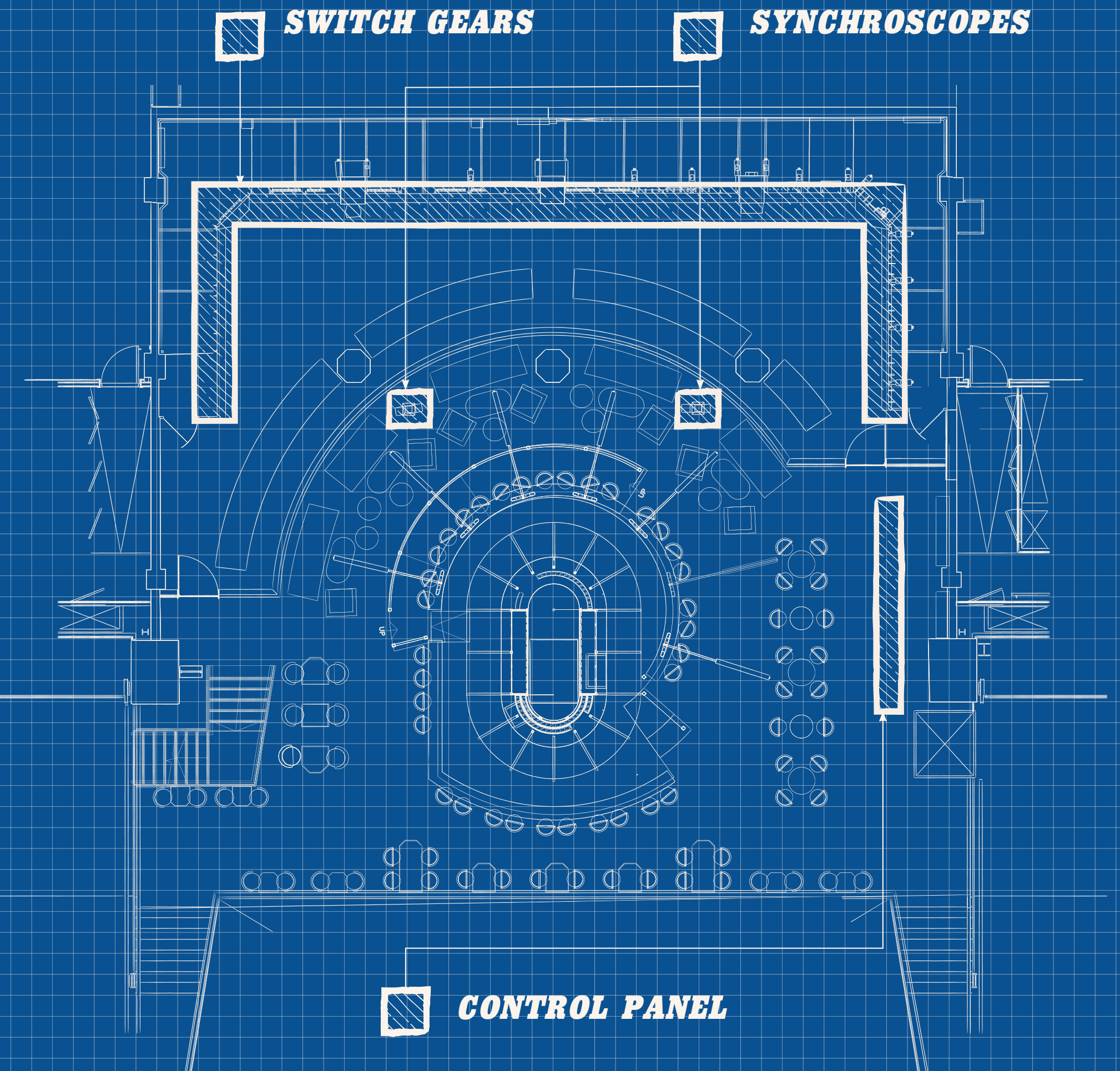
This operational blueprint has been authorised by the British Electrical Authority in accordance with Battersea Power Station.

For use by qualified engineers exclusively.



# CONTROL ROOM B

## AERIAL VIEW



### CHAMPAGNE

	750ml bottle	1,500ml magnum
<b>Moët &amp; Chandon</b> <b>Impérial Blanc NV</b>	£88	£185
<b>Moët &amp; Chandon</b> <b>Impérial Rosé NV</b>	£105	£225
<b>Moët &amp; Chandon</b> <b>Grand Vintage Blanc</b>	£120	
<b>Veuve Clicquot Yellow Label NV</b>	£110	
<b>Dom Pérignon Vintage Blanc</b>	£295	

### SPARKLING

	750ml
<b>Prosecco Spumante Extra Dry</b> <i>Ca' di Alte, Veneto, Italy</i>	£45
<b>Chapel Down Brut Reserve</b> <i>Kent, England</i>	£70
<b>Chapel Down Rosé Reserve</b> <i>Kent, England</i>	£72
<b>NON-ALCOHOLIC</b> <b>Wild Life Botanicals Nude Sparkling</b> <i>Cornwall, England</i>	£48

### BEER

	330ml
<b>Lager, Madri Excepcional 4.6%</b>	£7
<b>Lager, Camden Hells 4.6%</b>	£7.3
<b>Pale ale, Camden 4%</b>	£7.2
<b>Lager, Lucky Saint, 0.5% 53 kcal</b>	£6.8
<b>Pale Ale, Days, 0.0% 69 kcal</b>	£6.5

### CIDER

<b>Aspall Suffolk Draught Cyder 5.5% 330ml</b>	£7
<b>Strawberry &amp; Lime Cider, Rekorderlig 4% 500ml</b>	£7.3

### WINE

#### WHITE

	750ml bottle
<b>Macabeo, Molinico Loco, Murcia, Spain</b>	£36
<b>Pinot Grigio, 'P' Alpha Zeta, Veneto, Italy</b>	£42
<b>Loureiro &amp; Alvarinho, Azevedo, Vinho Verde, Portugal</b>	£44
<b>Chardonnay, Mas La Chevalière, Pays d'Oc, Languedoc-Roussillon, France</b>	£50
<b>Sauvignon Blanc, Tinpot Hut, Marlborough, New Zealand</b>	£60
<b>Cortese, La Giustiniana Lugarara, Gavi di Gavi, Piedmont, Italy</b>	£65

#### RED

<b>Merlot &amp; Corvina, Ponte Pietra, Veneto, Italy</b>	£36
<b>Monastrell, Familia Castaño, Murcia, Spain</b>	£42
<b>Malbec, Kaiken Clásico, Mendoza, Argentina</b>	£44
<b>Grenache, Willunga 100, McLaren Vale, South Australia</b>	£50
<b>Grenache, Mourvèdre, Syrah, Famille Perrin Côtes-du-Rhône, Southern Rhône, France</b>	£60
<b>Tempranillo, Izadi, Rioja Reserva, Rioja, Spain</b>	£65

#### ROSÉ

<b>Pinot Grigio Rosato, Ponte Pietra, Veneto, Italy</b>	£36
<b>Grenache blend, Maison Mirabeau, Classic, Côtes de Provence, France</b>	£45
<b>Grenach, Château d'Esclans Whispering Angel, Côtes de Provence, France</b>	£55

#### ORANGE

<b>Sauvignon Blanc, Macération de Soif Vin Orange, Domaine Joël Delaunay, Loire, France</b>	£58
---------------------------------------------------------------------------------------------	-----

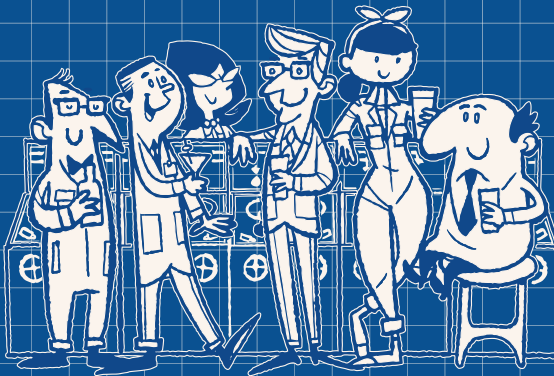
### WHAT'S ON?

**DISCOVER THE SECRETS OF CONTROL ROOM B**  
AUDIO-GUIDED TOUR



### PRIVATE PARTIES!

CONTROL ROOM B IS AVAILABLE TO HIRE FOR UP TO 250 GUESTS!  
EMAIL [EVENTS@CONTROLROOMB.COM](mailto:EVENTS@CONTROLROOMB.COM)



THIS SIDE CONTAINS:  
CHAMPAGNE  
BUBBLES  
WINE  
OVERSIZED LOGO  
BEERS  
NIBBLES  
HOPES  
MERCHANDISE  
DREAMS  
SWEET TREATS

**CONTROL ROOM B**  
**OPERATIONAL BLUEPRINT**

CONTROL ROOM B © 1955

This operational blueprint has been authorised by the British Electrical Authority in accordance with Battersea Power Station.  
For use by qualified engineers exclusively.